



Vidiwave – WDC Series Mini Dome

High Sensitivity Camera

The Vidiwave WDC-S2 series is a light mini-dome with a high-sensitivity camera for operation in variable light conditions. It is especially suitable where high-definition colour is important, such as passenger loading and unloading areas in public transport applications. With its IP66 rating, they are the professional choice. Suitable for both internal and external applications.

Extreme Reliability

The ultra-rugged dome housing is designed to be vandal resistant and waterproof and has an IP66 rating.

The 2-part aluminium housing protects the camera from damage caused by impact strikes, wear & tear, dust or water ingress. It is both visually appealing and practical, making the Vidiwave WDC-S3 camera range the professionals choice for all vehicle CCTV installations that require flexibility and versatility.

Optimal Performance

The Camera has a 3D Gimble to ensure the optimal image positioning, enabling excellent video quality whatever the mounting surface or location.

Image quality and overall performance is further maximised by a cutting-edge High-Resolution True Day/Night Wide Dynamic Range CCD Module.

It delivers maximum performance by combining low-light sensitivity with superb headlight suppression.

Vidiwave prides itself on designing fully integrated cameras that are configured and tested to fully optimise performance. This quality of performance is then fully certified by one of Europe's EMC Test Houses specialised in Automotive, Rail and Marine

Certifications

Rail: EMC - EN 50121-2-3 2006
Automotive: EMC - EC 95/54



Key Features

- True Day/Night Camera with Wide Dynamic Range for extreme headlight suppression
- Wide Dynamic Range
- Available on Surface Mount and Counter
- IP66 Rated - ideal for external or damp/air conditioned environments
- 3D Gimbal delivers maximum flexibility lens rotation and placement
- Polycarbonate Dome provides clear visibility and vandal resistant construction
- Ultra-High Resolution - 550TVL
- Die-Cast Casing and Polycarbonate Lens Cover
- 12VDC Power

CCD Sensor Type	Interline Transfer CCD
Effective Pixels	NTSC 768 (H) x 494 (V)
	PAL 752 (H) x 582 (V)
H Resolution	550 TV Lines
Sensitivity (mm)	Monochrome: 0 Lux/F1.2
	Colour: 0.05 Lux/F1.2
S/N Ratio	>48dB (AGC off)
Video Output	Composite 1Vp-p 75!
Electronic Shutter	NTSC: 1/60 - 1/100,000 sec PAL: 1/50 - 1000,000 sec Auto
Lens:	Standard 3.6mm F2.0 68°
Option	2.9mm, 6mm, 12mm
Current Consumption	100mA 12VDC
Operating Temperature	-10°C - +50°C (relative humidity 95% max)
IP Rating	IP66
Storage Temperature	-20°C - +70°C
Dimensions	70 (W) x 70 (L) x 56 (H) mm



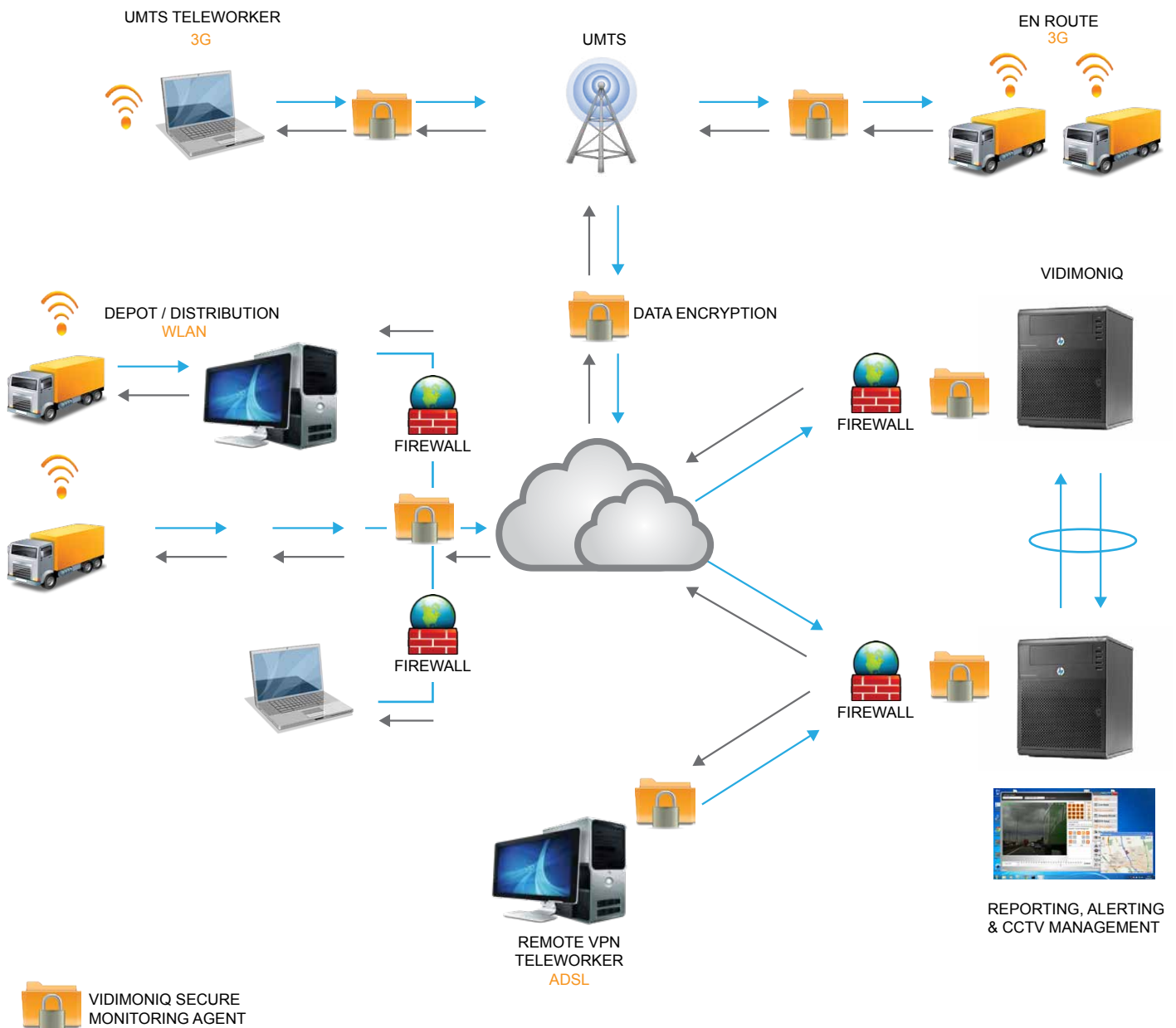
IDIWAVE
Wireless Mobile Video Solutions

Vidiwave™ Limited
Unit 5, Beaufort Court,
Roebuck Way, Knowhill
Milton Keynes, Bucks
MK5 8HL
Web: www.vidiwave.co.uk
Tel : +44 (0) 01908 661091

Vidiwave – Vidistor 8 CMD Pro - Compact

Mobile 8 Channel DVR with optional GPS tracking / G-sensors and Vehicle accident data.

Solution Connectivity Overview



© All Rights Reserved
Vidiwave Limited, Unit 5 Beaufort Court, Roebuck Way, Knowhill, Milton Keynes
Buckinghamshire, England - MK5 8HL

Recording Technology | 3G Network | Vehicle Camera Solutions | Cinema Room

www.vidiwave.co.uk