



Vidiwave – W.I.M.S. Module Automotive

Wireless Intelligent Monitoring System

Key Features

- Remote Health Checking of Train CCTV Systems via GPRS / 3G and WLAN
- PUSH Diagnostics / Alerts and Exception Reporting direct to your Maintenance Provider
- Embedded Linux Remote Agent syncs information to a Headend Server to give instant Fault Visibility and Reporting
- Simple access to Information via Secure Web-Portal using any Browser
- Supports Health Checking to other Legacy CCTV Systems**
- Supports Live Video Management via 3G / GPRS using "Public IP" SIM Card
- Supports Full Video Management including Playback / Preview and Backup via GPRS / 3G and WLAN
- Integrated Video Backup to a Secure Web-Based Video Vault with Video Sharing Feature for Evidence Distribution
- User Definable Report Distribution via Email and SMS
- GPS Vehicle Tracking with Live Video
- G-Sensor Integration
- Vehicle Telemetry Monitoring and Exception Reporting

Data / Failure Monitoring Options

- | | |
|----------------------|----------------------|
| • CANbus | • EDC |
| • RS422 | • IBIS |
| • X-Y G-Sensor | • HVAC |
| • Tacho | • Lighting |
| • LONworks | • Door Modules |
| • ATP | • Legacy CCTV |
| • RS232 | • SCADA |
| • PASCOM | • Earth Fault Detect |
| • FMS | • ECU |
| • Gearbox Controller | • RS485 |

Main PCB Specification

- Operating System Custom Embedded Linux
- CPU 500Mhz AMD Geode LX800 DRAM 256Mb DDR DRAM
- Storage 4Gb SLC Compact Flash OS and Samba
- Power DC Jack or Passive POE, 7VDC to 20VDC
- Connectivity 2 Ethernet Channels (via VT6105M 10/ 100)
- I/O DB9 Serial Port, Dual USB port



Wireless Modules

Enterprise Class Wireless LAN - via Mini PCI

- 802.11a/b/g (up to 108Mbps) - Seamless 2.4 & 5Ghz Switching
- Up to 200mw Transmit Power - External Range up to +500m
- Advanced Security - WEP WPA AES, WPA2 (IEEE 802.11i), (IEEE 802.1x Authentication)
- Additional support for 802.11 d, h, i, j including Multi-Country Roaming Support
- DFS/TPC: Dynamic Frequency Selection/Transmit Power Control for International Fleet Operation
- Support for 802.11e, the QOS Support for Wireless Multimedia Enhancements

Mobile - via Mini PCI

- Support for Third Generation (3G) Digital Cellular Standards
- Supports Quad-Band EDGE / GPRS / GSM 850/900/1800/1900 Mhz
- Supports Tri-Band UMTS
- Peak Download Speed up to 7.2 Mbps*
- Peak Upload Speed up to 2.0 Mbps*
- Dual Antenna Diversity for Improved Performance

* Subject to network conditions

** Enquire if your legacy CCTV devices are already supported.



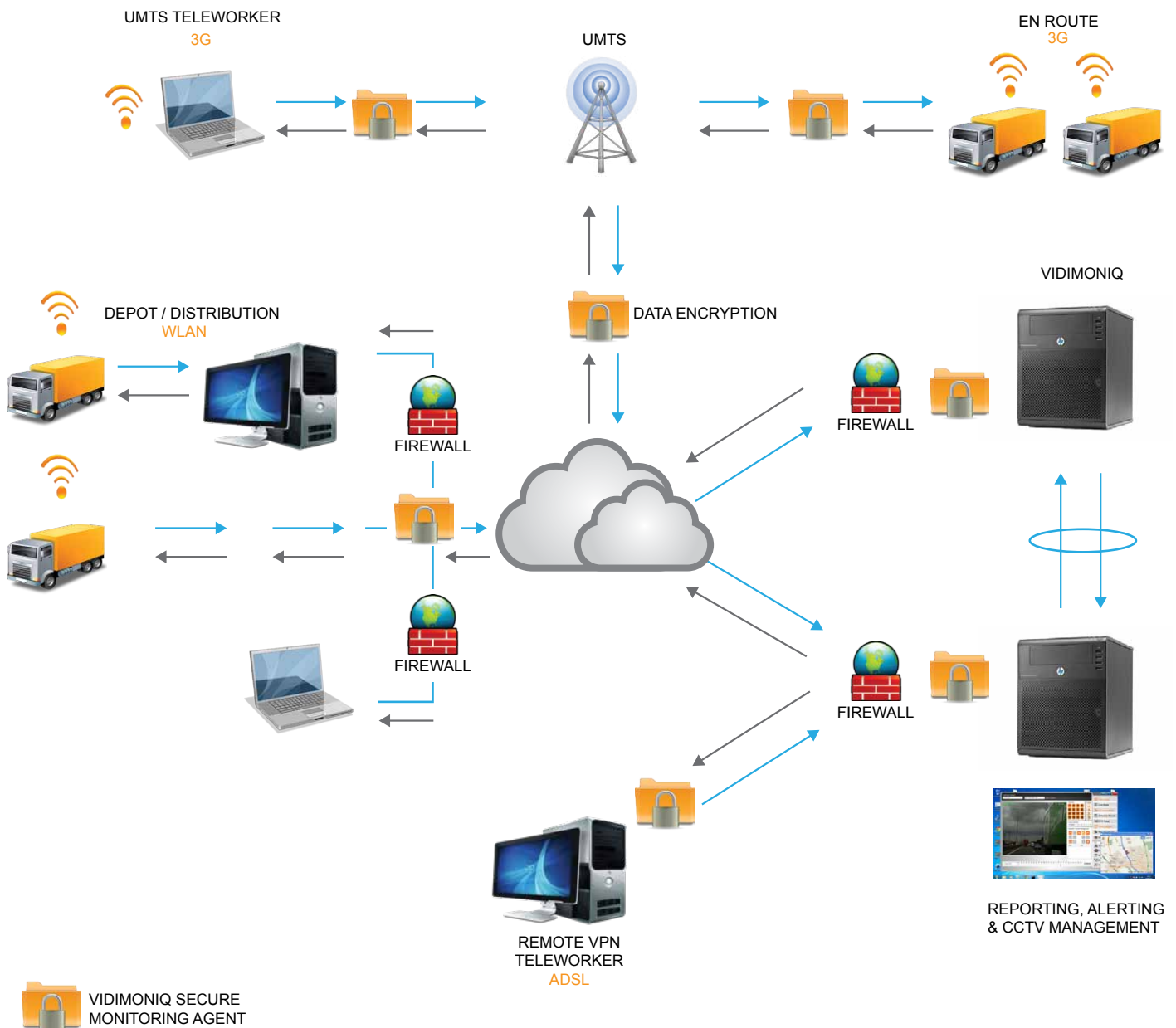
IDIWAVE
Wireless Mobile Video Solutions

Vidiwave™ Limited
Unit 5, Beaufort Court,
Roebuck Way, Knowhill
Milton Keynes, Bucks
MK5 8HL
Web: www.vidiwave.co.uk
Tel : +44 (0) 01908 661091

Vidiwave – W.I.M.S. Access Point - Depot

WLAN / 3G Module | Wireless Intelligent Monitoring System

Solution Connectivity Overview



© All Rights Reserved
Vidiwave Limited, Unit 5 Beaufort Court, Roebuck Way, Knowhill, Milton Keynes
Buckinghamshire, England - MK5 8HL

Recording Technology | 3G Network | Vehicle Camera Solutions | Cinema Room

www.vidiwave.co.uk