



Vidiwave™ Limited
Unit 5, Beaufort Court,
Roebuck Way, Knowhill
Milton Keynes, Bucks
MK5 8HL
Web: www.vidiwave.com
Tel : +44 (0) 01908 690090

Vidiwave – Bus Pro Compact

Ruggedised Mobile 8 Channel DVR with optional Live GPS tracking and Vehicle CAN-bus data.

Key Features

- Embedded Linux OS for reliability.
- H.264 Compression for analogue cameras.
- Compact ruggedised design with video back-up via removable USB storage.
- Dual Stream – Optimising network transfer speeds via WLAN and 3G.
- User Friendly GUI – Flexible, Easy to use.
- Advanced Remote Management Software – integrates all video and CCTV diagnostics.
- S.M.A.R.T: Self-Monitoring Analysis and Reporting Technology – via RMS.
- Mobile Device Support: iPhone, Android.
- Spot monitor output for in-vehicle display.
- Audio recording: to support video evidence.
- Built-in Vibration Protection
- Variable Automotive PSU options - supporting 12V / 24V and 9-36VDC applications
- Built-in support for GPS tracking with video image live and playback.
- Optional CAN-bus remote diagnostics support with condition alerting.

Software Features

- Remote Set-up (Configuration)
- Remote Health Checking via RMS
- Remote Playback via 3G and WLAN
- Local playback via USB Mouse
- Remote Event Search Engine
- Archiving to USB Flash Drive or HDD
- Built-in Web Client
- Multi-channel Display
- Live Monitoring via 3G or WLAN of monitor out
- Motion detection support
- Remote User Log
- Integrated email alerting
- SMTP fault reporting: direct to VCMS software.
- Recording modes supported: Continuous, Motion, Alarm, scheduled and combination mode.
- Search by GPS location.



Hardware Features

- Embedded Linux Operating System
- NTSC/PAL compatible
- Video: 8 BNC (analogue)
- Spot Monitor Output: 1 BNC (analogue)
- Max Recording Rate: CIF: 120/100 fps ; D1 120/100 fps
- Recording Quality Options: Super / High / Standard
- Audio Inputs: 2
- Audio Outputs: 2
- Ethernet: 1 x RJ45 supporting 10/100/1000 Mbps
- USB Interface: 2 x USB port
- GPS Serial Interface: 1 x 9 sub-D port
- Storage Options: 1 x eSATA up to 1.5 Terabyte
- Removable Storage Options: USB HDD or USB Flash Drive
- Wireless Storage Options: Secure CLOUD VPS storage – via 3G and WLAN to VidiVault.
- Local set-up: Via USB mouse or built-in front panel keyboard.
- Power Input: 12VDC
- Power Output: Via VidiSafe Bus Pro (12VDC 2.5 Amps for cameras / WLAN / 3G & CAN-bus diagnostics)

Hardware Options

- Integrated GPS tracking: Via GPS tracking antenna optional hardware.
- G-sensor and Vehicle telemetry via Accident Management Module
- HDD options: 500GB / 750GB / 1TB or 1.5TB
- WLAN / 3G video management module
- Health Diagnostics for CCTV (PUSH technology) – via 3G & WLAN
- Industrial Flash HDD: For Video Back-up > 32GB
- Automotive grade PDU (vidisafe) – for full spike protection and reverse polarity isolated from the rest of the vehicle electrics - separate self-healing fused outputs.



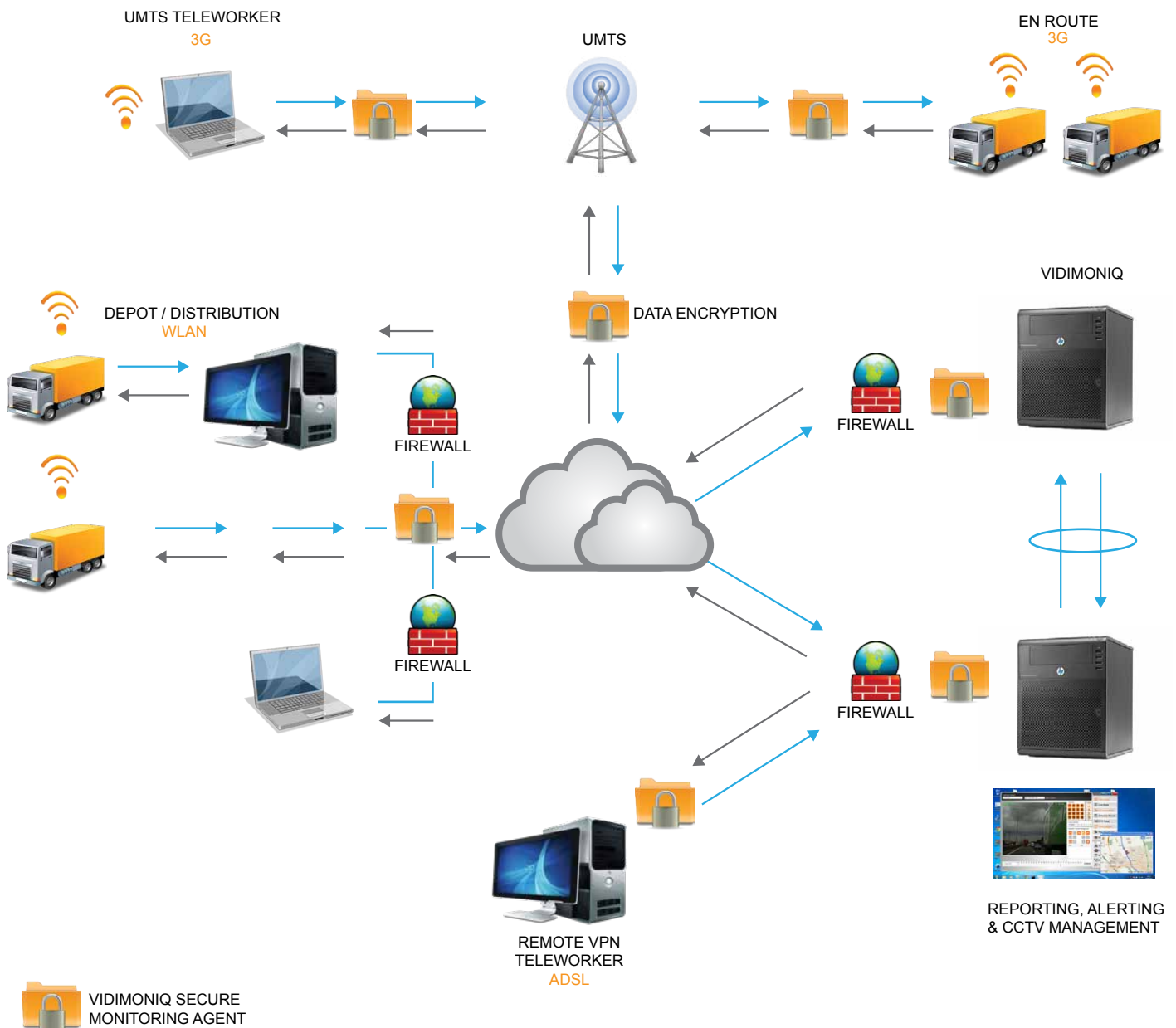
IDIWAVE
Wireless Mobile Video Solutions

Vidiwave™ Limited
Unit 5, Beaufort Court,
Roebuck Way, Knowhill
Milton Keynes, Bucks
MK5 8HL
Web: www.vidiwave.com
Tel : +44 (0) 01908 690090

Vidiwave – Bus Pro Compact

Ruggedised Mobile 8 Channel DVR with optional Live GPS tracking and Vehicle CAN-bus data.

Solution Connectivity Overview



© All Rights Reserved
Vidiwave Limited, Unit 5 Beaufort Court, Roebuck Way, Knowhill, Milton Keynes
Buckinghamshire, England - MK5 8HL

Recording Technology | 3G Network | Vehicle Camera Solutions | Cinema Room

www.vidiwave.com