



Vidiwave™ Limited
Unit 5, Beaufort Court,
Roebuck Way, Knowhill
Milton Keynes, Bucks
MK5 8HL
Web: www.vidiwave.com
Tel : +44 (0) 01908 690090

Vidiwave – W.I.M.S. Access Point - Depot

WLAN / 3G Module | Wireless Intelligent Monitoring System

Key Features

- Remote health checking of Depot WLAN system via GPRS / 3G and ADSL.
- PUSH diagnostics alerting of network health / failures direct to maintenance provider.
- Embedded Linux remote agent syncs information to secure Cloud Server to
- give instant fault visibility, reporting and remote management capability.
- Simple access management via secure web-portal using any browser.
- Supports health checking to other legacy network devices. **
- Supports live video management via 3G / GPRS using “public IP” SIM cards.
- Supports full video management including playback / preview and back up via GPRS / 3G and WLAN.
- Integrated video back up to a secure web-based video vault with video sharing feature for evidence distribution.
- User-definable report distribution via email and SMS.
- Vehicle telemetry monitoring and exception reporting supported to vehicles in depot.
- IP65 Rated Enclosure

Data / Failure Monitoring Options

- TCP/IP Network Serial Bus
- WLAN 5 GHz HDD
- WLAN 2.4 GHz Processor Health
- USB Printers
- Remote
- Workstations
- Managed HUB /
- ADSL routers

Main PCB Specification

- Operating system: Custom Embedded Linux
- CPU: 500Mhz AMD Geode LX800 DRAM
- 256MB DDR DRAM
- Storage: 4GB SLC Compact Flash – OS and Samba
- Power: DC jack or Passive POE, 7VDC to 20VDC
- Connectivity: 2 Ethernet channels (via VT6105M 10/100)
- I/O: DB9 serial port, dual USB port



Wireless Modules

Enterprise Class Wireless LAN – via Mini PCI

- 802.11 a/b/g (up to 108 Mbps) – 2.4 & 5 GHz Frequency switching
- Up to 200mw Transmit power – External range of up to 500m +
- Advanced Security - WEP, WPA AES, WPA2 (IEEE 802.11i), IEEE 802.1x Authentication
- Additional support for 802.11 d,h,i,j including multi country roaming support,
- DFS/TPC: Dynamic Frequency selection / transmit power control for international fleet operation.
- Support for 802.11e : the QOS support for wireless multimedia enhancements
- Extended Passive PoE cable runs supported - up to 200 ft using CAT5e or better.

Cellular (3G/GPRS) – via Mini PCI

- Support third generation (3G) digital cellular standards
- Supports quad band EDGE/GPRS/GSM 850/900/1800/1900 MHz
- Supports tri-band UMTS
- Peak download speeds up to 7.2 Mbps*
- Peak upload speeds of up to 2.0 Mbps*
- Dual antenna diversity for improved performance

* Subject to network conditions

** Enquire if your legacy Network devices are already supported.



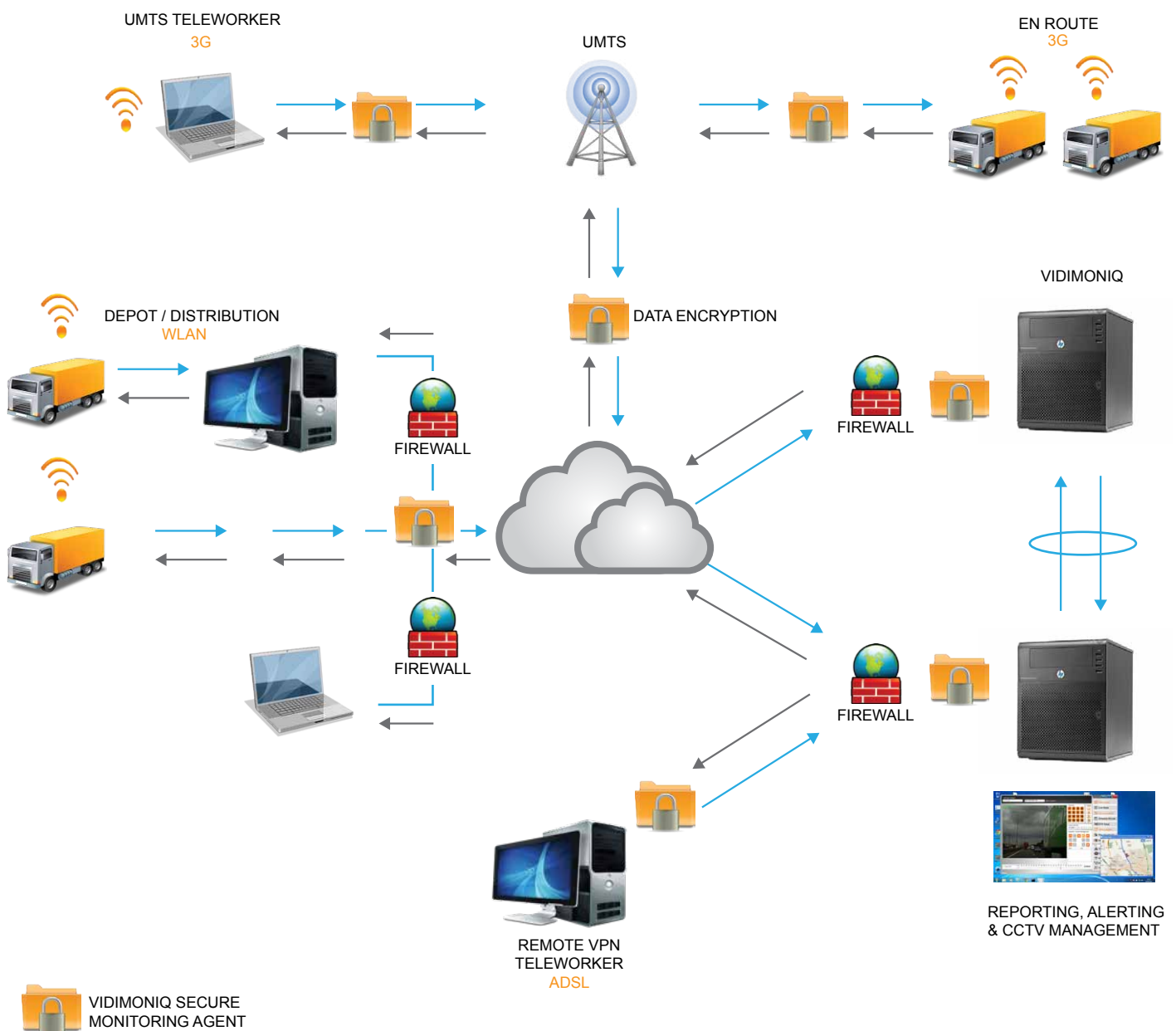
IDIWAVE
Wireless Mobile Video Solutions

Vidiwave™ Limited
Unit 5, Beaufort Court,
Roebuck Way, Knowhill
Milton Keynes, Bucks
MK5 8HL
Web: www.vidiwave.com
Tel : +44 (0) 01908 690090

Vidiwave – W.I.M.S. Access Point - Depot

WLAN / 3G Module | Wireless Intelligent Monitoring System

Solution Connectivity Overview



© All Rights Reserved
Vidiwave Limited, Unit 5 Beaufort Court, Roebuck Way, Knowhill, Milton Keynes
Buckinghamshire, England - MK5 8HL

Recording Technology | 3G Network | Vehicle Camera Solutions | Cinema Room

www.vidiwave.com